



Chells Lane, Chells Manor, Stevenage, SG2 7AA

****BACK TO THE MARKET**** IDYLICALLY LOCATED IN THE HISTORICAL Chells Manor (As Mentioned in the Domesday Book) THIS CHARMING 1980's Character Leech Homes Built THREE BEDROOM End Of Terraced Cottage with GARAGE and PARKING FOR THREE CARS moments walk to the Chells Manor House and Duck Pond. Features include, COUNTRY STYLE KITCHEN, Lounge and Dining Area with Open Fireplace, Downstairs Cloakroom, THREE SPACIOUS BEDROOMS, Family Bathroom, OFFERED CHAIN FREE

£375,000

Chells Lane, Chells Manor, Stevenage, SG2 7AA



- Idyllically located in the historical Chells Manor
- Moments walk to the Chells Manor House and Duck Pond
- Downstairs Cloakroom
- OFFERED CHAIN FREE
- Charming 1980's Character Three Bedroom End Of Terrace Cottage
- Country Style Kitchen
- Three Spacious Bedrooms
- Garage and Parking for Three Cars
- Lounge and Dining Area with Open Fire Place
- Family Bathroom

Entrance Hallway Opening to Lounge and Dining Area

Door to Front Aspect, Stairs to 1st Floor Landing, Opening up to Lounge and Dining Room, Door to Kitchen, Double Panel Radiator.

Downstairs W.C

Low Level W.C, Wash Basin with Tiled Splash Back, Single Panel Radiator, Window to Front Aspect.

Countryside Style Kitchen

11'0 x 6'3 (3.35m x 1.91m)

Solid Beech Work Surfaces, Cupboards at Eye and Base Level, Spot Lighting, 4 Ring Gas Hob and Electric Oven, Extractor Fan over, Tiled Splash Back, Space for Dishwasher, Washing Machine and Tumble Dryer, Butler Sink with Mixer Tap, Window to Side Aspect, Tiled Flooring, Exposed Beams, Electric Oven, Double Panel Radiator.

Lounge/Diner

18'0 x 12'6 (5.49m x 3.81m)

2 x Double Panel Radiator, Dimmer Switch, Smoke Alarm, Window to Side Aspect, French Doors Opening to Garden, Open Fire with Tiled Surround.

Landing

9'0 x 3'1 (2.74m x 0.94m)

Doors to all rooms, Smoke Alarm, Loft Access (*Please note spray insulation (Huntsman H2Foam Lite Open Cell Spray) has been professionally installed in 2019 by Evergreen Power Ltd allowing the loft and roof area to breath sufficiency in both directions, you must check with your lender policy on spray insulation).

Other information on the spray foam - Huntsman H2Foam Lite is the only water blown open cell spray foam on the market so unlike chemically blown spray foams when sprayed it gives off water vapour steam and retracts slightly as part of curing process.

Bedroom One

10'0 x 12'3 (3.05m x 3.73m)

Double Panel Radiator, 2 x Window to Rear Aspect, Coved Ceiling.

Bedroom Two

8'0 x 10'4 (2.44m x 3.15m)

Double Panel Radiator, 2 x Window to Front Aspect, Fitted Wardrobes, Over Stairs Cupboard with Worcester Combi Boiler, Dimmer Switch, Smoke Alarm.

Bedroom Three

7'0 x 8'10 (2.13m x 2.69m)

Laminate Flooring, Window to Side Aspect, Up and Over Furniture, Single Panel Radiator, Dimmer Switch,

Family Bathroom

6'0 x 5'10 (1.83m x 1.78m)

Tiled Flooring, Low Level W.C, Wash Basin with Hot and Cold Taps, Window to Side Aspect, Bath and Mixer Tap with Handheld Shower attachment, Tiled Surround.

Garage and Driveway

Metal Up and Door, Power and Lighting, Driveway in front of the garage and allocated parking space to the side of the garage.

Front Driveway and Garden

Driveway for One Car, Laid to Lawn area, Side Gated Access, Mature Hedge and Tree.

Rear Garden

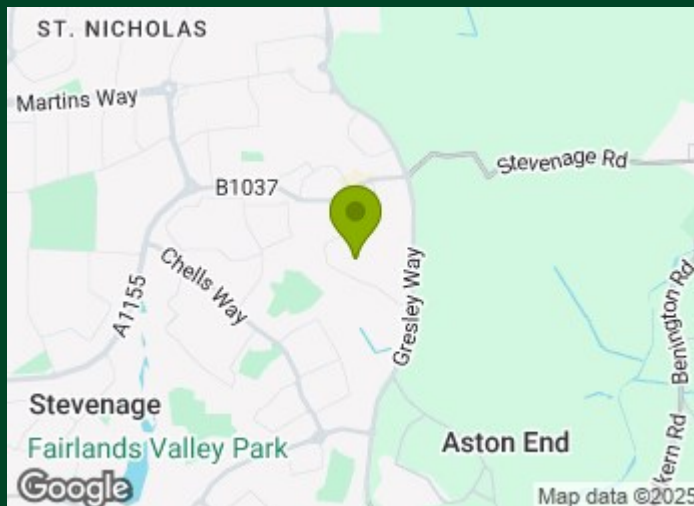
Laid to Lawn, Mature Trees and Shrubs, Rear Gated Access to Private Road and Garage, Side Access leading to Front Garden.

Local Information on Chells Lane and Manor

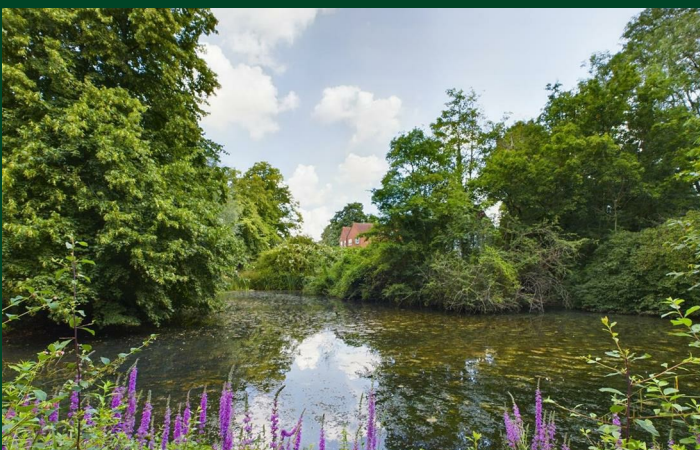
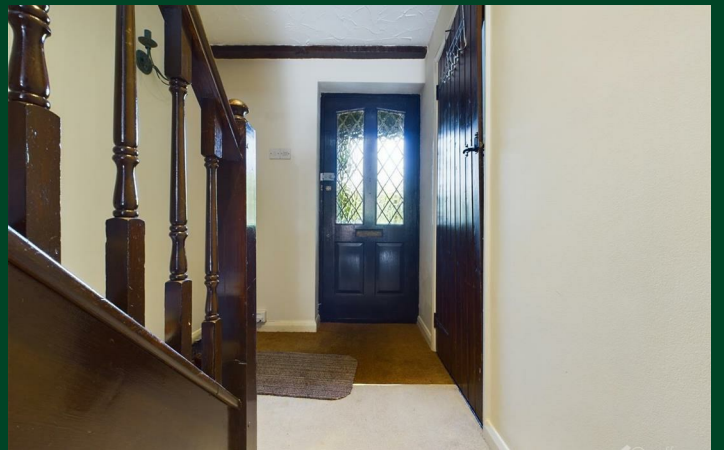
Chells Lane has a fascinating history and Chells Manor mentioned appears in the Domesday book, this property is idyllically located overlooking Chells Manor House (As Pictured) and is moments walk to the duck pond.

History on Chells Manor House and Chells Manor - Chells Manor House is a grade II listed building which is mentioned in the Domesday Book. It was built in either the late 14th or early 15th century for the Wake family, and was originally joined with the Manor of Box.

Between 1216 and 1272 the manor at Chells was held by the Knights Templars and afterwards the the Knights Hospitallers until King Henry VII's Dissolution of the Monasteries where it was eventually passed down to William Hale of King's Walden. This explains the nearby street names of 'Knights Templars Green' and 'Kings Walden Rise,



Directions



Floor Plan



Council Tax Details

Band D

These particulars, whilst believed to be accurate are set out as a general outline only for guidance and do not constitute any part of an offer or contract. Intending purchasers should not rely on them as statements of representation of fact, but must satisfy themselves by inspection or otherwise as to their accuracy. No person in this firm's employment has the authority to make or give any representation or warranty in respect of the property.

